

COOL-LUX

CAMERA RIGS AND ACCESSORIES



Patent pending

COOL-LUX

SHIFT BASEPLATE SBP100/951000



Features

- Quick-Shift tripod plate that provides chest support in shoulder mode or a tripod mount for your tripod.
- Integrated shoulder pad.
- Sliding dovetail with over 4.5 inches of balance adjustment range.
- Adjustable rod ports for aligning and mounting camera accessories.
- Precision milled aluminum and stainless steel construction.
- Lightweight sets of 4" and 8" carbon fiber iris rods.
- Works with all cameras.
- Lifetime warranty.

Patent pending

CAMERA RIGS

FS7 COOL-RIG CRFS7100/951500



Features

- SHIFT Baseplate with Quick-Shift action and chest support.
- Rosette Mount compatible with the FS7 Handle.
- Integrated shoulder pad.
- Sliding dovetail with over 4.5 inches of balance adjustment range.
- Adjustable rod ports for aligning and mounting camera accessories.
- Precision milled aluminum and stainless steel construction.
- Lightweight sets of 4" and 8" carbon fiber iris rods.
- Everything you need to move quickly between shoulder mount and tripod.
- Lifetime warranty.

FS7 COOL-RIG WITH COUNTERWEIGHT CRFS7101/951501

Includes

- SHIFT Baseplate
- Female Rod Rosette M6
- Counterweight



Features

- Everything included in the FS7 Cool-Rig plus:
- Modular weight assembly for the perfect level of counterbalance for your specific setup.

FS7 COOL-RIG WITH CHEESEPLATE CRFS7102/951502

Includes

- SHIFT Baseplate
- Female Rod Rosette M6
- Universal Cheeseplate



Features

- Everything included in the FS7 Cool-Rig plus:
- Universal Cheeseplate for mounting: battery power, external recorders, video transmitters, audio receivers, etc.

ENG COOL-RIG CRENG100/951510



Features

- SHIFT Baseplate with Quick-Shift action and chest support.
- Single Grip with the versatility of a highly adjustable rosette interface and 4.5" of telescoping action.
- Integrated shoulder pad.
- Sliding dovetail with over 4.5 inches of balance adjustment range.
- Adjustable rod ports for aligning and mounting camera accessories.
- Precision milled aluminum and stainless steel construction.
- Lightweight sets of 4" and 8" carbon fiber iris rods.
- Everything you need to move quickly between shoulder mount and tripod.
- Lifetime warranty.

ENG COOL-RIG WITH COUNTERWEIGHT CRENG101/951511

Includes

- SHIFT Baseplate
- Single Grip
- Counterweight



Features

- Everything included in the ENG Cool-Rig plus:
- Modular weight assembly for the perfect level of counterbalance for your specific setup.

ENG COOL-RIG WITH CHEESEPLATE CRENG102/951512

Includes

- SHIFT Baseplate
- Single Grip
- Universal Cheeseplate



Features

- Everything included in the ENG Cool-Rig plus:
- Universal Cheeseplate for mounting: battery power, external recorders, video transmitters, audio receivers, etc.

ENG COOL-RIG WITH TOP HANDLE AND COUNTERWEIGHT CRENG103/951513

Includes

- SHIFT Baseplate
- Single Grip
- Top Handle
- Counterweight



Features

- Everything included in the ENG Cool-Rig plus:
- Top Handle with telescoping action and left to right adjustment on a NATO rail for dialing in the perfect balance.
- Modular weight assembly for the perfect level of counterbalance for your specific setup.

ENG COOL-RIG WITH TOP HANDLE AND CHEESEPLATE CRENG104/951514

Includes

- SHIFT Baseplate
- Single Grip
- Top Handle
- Universal Cheeseplate



Features

- Everything included in the ENG Cool-Rig plus:
- Top Handle with telescoping action and left to right adjustment on a NATO rail for dialing in the perfect balance.
- Universal Cheeseplate for mounting: battery power, external recorders, video transmitters, audio receivers, etc.

CINE COOL-RIG *CRCN100/951520*



Features

- SHIFT Baseplate with Quick-Shift action and chest support.
- Telescoping Dual Grips for added comfort and support.
- Integrated shoulder pad.
- Sliding dovetail with over 4.5 inches of balance adjustment range.
- Adjustable rod ports for aligning and mounting camera accessories.
- Precision milled aluminum and stainless steel construction.
- Lightweight sets of 4" and 8" carbon fiber iris rods.
- Everything you need to move quickly between shoulder mount and tripod.
- Lifetime warranty.

CINE COOL-RIG WITH COUNTERWEIGHT *CRCN101/951521*

Includes

- SHIFT Baseplate
- Dual Grips
- Counterweight



Features

- Everything included in the Cine Cool-Rig plus:
- Modular weight assembly for the perfect level of counterbalance for your specific setup.

CINE COOL-RIG WITH CHEESEPLATE *CRCN102/951522*

Includes

- SHIFT Baseplate
- Dual Grips
- Universal Cheeseplate



Features

- Everything included in the Cine Cool-Rig plus:
- Universal Cheeseplate for mounting: battery power, external recorders, video transmitters, audio receivers, etc.

CINE COOL-RIG WITH TOP HANDLE AND COUNTERWEIGHT *CRCN103/951523*

Includes

- SHIFT Baseplate
- Dual Grips
- Top Handle
- Counterweight



Features:

- Everything included in the Cine Cool-Rig plus:
- Top Handle with telescoping action and left to right adjustment on a NATO rail for dialing in the perfect balance.
- Modular weight assembly for the perfect level of counterbalance for your specific setup.

CINE COOL-RIG WITH TOP HANDLE AND CHEESEPLATE *CRCN104/951524*

Includes

- SHIFT Baseplate
- Dual Grips
- Top Handle
- Universal Cheeseplate



Features:

- Everything included in the Cine Cool-Rig plus:
- Top Handle with telescoping action and left to right adjustment on a NATO rail for dialing in the perfect balance.
- Universal Cheeseplate for mounting: battery power, external recorders, video transmitters, audio receivers, etc.

CLASSIC COOL-RIG CRCL100/951530



Features

- SHIFT Baseplate with Quick-Shift action and chest support.
- Deluxe Walnut Grip with rosette attachment at iris rods.
- Integrated shoulder pad.
- Sliding dovetail with over 4.5 inches of balance adjustment range.
- Adjustable rod ports for aligning and mounting camera accessories.
- Precision milled aluminum and stainless steel construction.
- Lightweight sets of 4" and 8" carbon fiber iris rods.
- Everything you need to move quickly between shoulder mount and tripod.
- Lifetime warranty.

CLASSIC COOL-RIG WITH COUNTERWEIGHT CRCL101/951531

Includes

- SHIFT Baseplate
- Walnut Grip
- Counterweight



Features

- Everything included in the Classic Cool-Rig plus:
- Modular weight assembly for the perfect level of counterbalance for your specific setup.

CLASSIC COOL-RIG WITH CHEESEPLATE CRCL102/951532

Includes

- SHIFT Baseplate
- Walnut Grip
- Universal Cheeseplate



Features

- Everything included in the Cine Cool-Rig plus:
- Universal Cheeseplate for mounting: battery power, external recorders, video transmitters, audio receivers, etc.

CLASSIC COOL-RIG WITH TOP HANDLE AND COUNTERWEIGHT CRCL103/951533

Includes

- SHIFT Baseplate
- Walnut Grip
- Top Handle
- Counterweight



Features:

- Everything included in the Cine Cool-Rig plus:
- Top Handle with telescoping action and left to right adjustment on a NATO rail for dialing in the perfect balance.
- Modular weight assembly for the perfect level of counterbalance for your specific setup.

CLASSIC COOL-RIG WITH TOP HANDLE AND CHEESEPLATE CRCL104/951534

Includes

- SHIFT Baseplate
- Walnut Grip
- Top Handle
- Universal Cheeseplate



Features:

- Everything included in the Cine Cool-Rig plus:
- Top Handle with telescoping action and left to right adjustment on a NATO rail for dialing in the perfect balance.
- Universal Cheeseplate for mounting: battery power, external recorders, video transmitters, audio receivers, etc.



DG100



WGR100



SG100



TG100



TH100



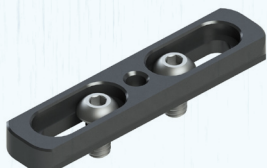
MFR100



FRR100



MRR100



NR3



RB100



CWA100



UCP100

DUAL GRIPS DG100/951075

Two handed grips for camera rig

Features

- Complete side to side movement and 360° of grip adjustment.
- Grips can easily transition from down and out for shoulder use to up and beside the camera for more of a cage style handheld feel when shoulder mounting isn't practical.
- Telescoping handles can dial in to the length that is perfect for each user.
- Durable, silicone rubber grips that were designed to work in any position.
- ¼ 20 taps for mounting accessories like a monitor or recorder.
- Lifetime warranty.

WALNUT GRIP WGR100/951080

Ergonomic wooden handle for camera rig

Features

- organic natural wood feel.
- elegant ergonomic design.
- milled from solid walnut, hand sanded and sealed with a hand-rubbed, tung oil finish.
- rosette connection to dial in a comfortable wrist position.
- Lifetime warranty.

SINGLE GRIP SG100/951070

Single telescoping grip for camera rig.

Includes

Telescoping Grip, Rod Rosette Mount

Features

- Full x, y, and z positioning of the grip through rod clamp angle and rosette connection.
- 4.5 inches of telescoping action to dial in the perfect length.
- Uniform grip geometry that works in any orientation.
- Silicone rubber grip for optimal comfort and durability.
- Lifetime warranty.

TELESCOPING GRIP TG100/951050

Handgrip with telescoping action

Features

- 4.5 inches of telescoping action to dial in the perfect length.
- Uniform grip geometry that works in any orientation.
- Silicone rubber grip for optimal comfort and durability.
- 15mm rod for compatibility with industry standard clamps.
- Lifetime warranty.

TOP HANDLE TH100/951090

Features

- Side to side balance with positioning of the grip on a standard 3 inch Nato rail.
- 4.5 inches of telescoping action to dial in the perfect balance point.
- Nato rail can mount to any camera or rig component with ¼ 20 taps spaced ⅞" to 2 ⅞" (22.25mm to 53.9mm) center to center.
- Silicone rubber grip for optimal comfort and durability.
- Lifetime warranty.

ROD ROSETTE MOUNT MFR100/951065

Rod mount with rosette angle adjustment.

Includes

Rod Rosette Male, Rod Rosette Female.

Features

- Male and female rosettes based on Arri 60 tooth standard.
- Attach accessories to 15mm rods with the versatility and stability of a rosette mount.
- Make angle adjustments quickly and easily with the captured wing lever.
- Lifetime warranty.

ROD ROSETTE FEMALE FRR100/951060

Rosette mount with ¼ 20 or M6 female threads

Features

- Arri 60 tooth rosette pattern with choice of ¼ 20 (FRR100) or M6 (FRR200) internal thread.
- 15mm rod clamp with Cool-Lux ratcheting lever.
- Lifetime warranty.

ROD ROSETTE MALE **MRR100**/951055

Rosette mount with ¼ 20 or M6 male screw.

Features

- Arri 60 tooth rosette pattern with choice of ¼ 20 (MMR100) or M6 (MMR200) thread.
- 15mm rod clamp.
- Make angle adjustments quickly and easily with the captured wing lever.
- Lifetime warranty.

NATO RAIL **NR3**/951100

Mounting rail

Features

- 3 inch long NATO rail can mount to any camera or rig component with ¼ 20 taps spaced ¼" to 2 ½" (22.25mm to 53.9mm) center to center.
- Allows for quick on and off attachment of accessories compatible with the NATO standard.
- Lifetime warranty.

ROD BRIDGE **RB100**/951105

Rod mount for accessories

Features

- Four ¼ 20 and two ⅜ 16 taps for mounting accessories such as monitors, sound recorders, video recorders, etc.
- Attaches securely to 15mm lightweight rods with two ratcheting levers.
- Lifetime warranty.

COUNTERWEIGHT **CWA100**/951110

Counterweights with rod mount.

Features

- Three 1.5 lb stackable weight plates allow for customization.
- One ⅜ 16 and two ¼ 20 taps available for attaching articulating arms or other accessories.
- Quickly slide forward and back on the rods to dial in counterbalance.
- Lifetime warranty.

SINGLE WEIGHT PLATE **CW100**/951115

Counterweight

Features

- 1.5 lb stackable weight plate to add weight where you need it.
- Can be attached to a Cool-Lux Cheeseplate to provide extra counterbalance or added to the counterweight assembly for more weight.
- ¼ 20 counterbores and taps are spaced 1" apart and can be used to attach a weight anywhere an open ¼ 20 tap is available.
- Lifetime warranty.

UNIVERSAL CHEESEPLATE **UCP100**/951125

Cheeseplate for mounting accessories

Features

- Battery mount holes and hardware for:
 - V-Mount style battery plates (IDX, Switronix, etc.).
 - All Anton Bauer battery plates (QR, QRC, etc.).
 - Switronix Jetpack.
- Mounts for:
 - AJA Ki Pro / Ki Pro Mini.
 - Teredeck Bolt.
- Two ¼ 20 screws for mounting accessories and recorders or attaching the plate to available ¼ 20 taps on a camera rig.
- Plenty of ¼ 20 and ⅜ 16 taps.
- ¼ 20 taps at metric (9mm) and standard (0.5") spacings.
- positionable rod mount allowing for vertical horizontal and offset attachment to the rig.
- Lifetime warranty.

WITH 3-STUD BATTERY PLATE **UCP100A**/951130

WITH V-MOUNT BATTERY PLATE **UCP100S**/951135

CARBON FIBER IRIS RODS

Features:

- Carbon Fiber construction for lightweight and superior strength.
- Included end caps to protect the rod ends from accidental damage.
- Slightly undersized 14.9mm tube diameter for ultra smooth sliding of all 15mm compatible accessories.
- Sold in pairs.
- Lifetime warranty.

Available lengths:

- 3" CARBON FIBER RODS **IRS3**/951302
- 4" CARBON FIBER RODS **IRS4**/951300
- 5" CARBON FIBER RODS **IRS5**/951303
- 6" CARBON FIBER RODS **IRS6**/951304
- 7" CARBON FIBER RODS **IRS7**/951305
- 8" CARBON FIBER RODS **IRS8**/951301
- 10" CARBON FIBER RODS **IRS10**/951306
- 12" CARBON FIBER RODS **IRS12**/951307

LUXGEAR /951410

Lens gears for use with a follow focus

These cinema pitched lens gears are compatible with any standard follow focus. Each gear is designed to stretch over the focus barrel of a lens and stay in place with a tight compression fit. This new patent pending design eliminates the need for buckle mechanisms, tie wraps and screws and in turn allows for a smooth, continuous 360° of rotation. The gears can be quickly installed or removed without the need for tools and are completely reusable. Convenience is key to this new product.

Features

- 0.8 cinema pitch geared teeth for compatibility with any standard follow focus.
- Precision molded, high-durometer silicone construction.
- Compression fit allows for easy tool-less installation and removal.
- Continuous 360° of rotation.
- Secure fit on lenses with barrel diameters between 60mm and 92mm.
- Convenient no-buckle design.
- 16 sizes to choose from.



Patent pending

COOL-LUX UNIVERSAL RIG ACCESSORIES



COOL-LUX

a division of PromarkBRANDS

Bartlett, IL USA

800.223.2589

www.cool-lux.com



MADE IN USA